

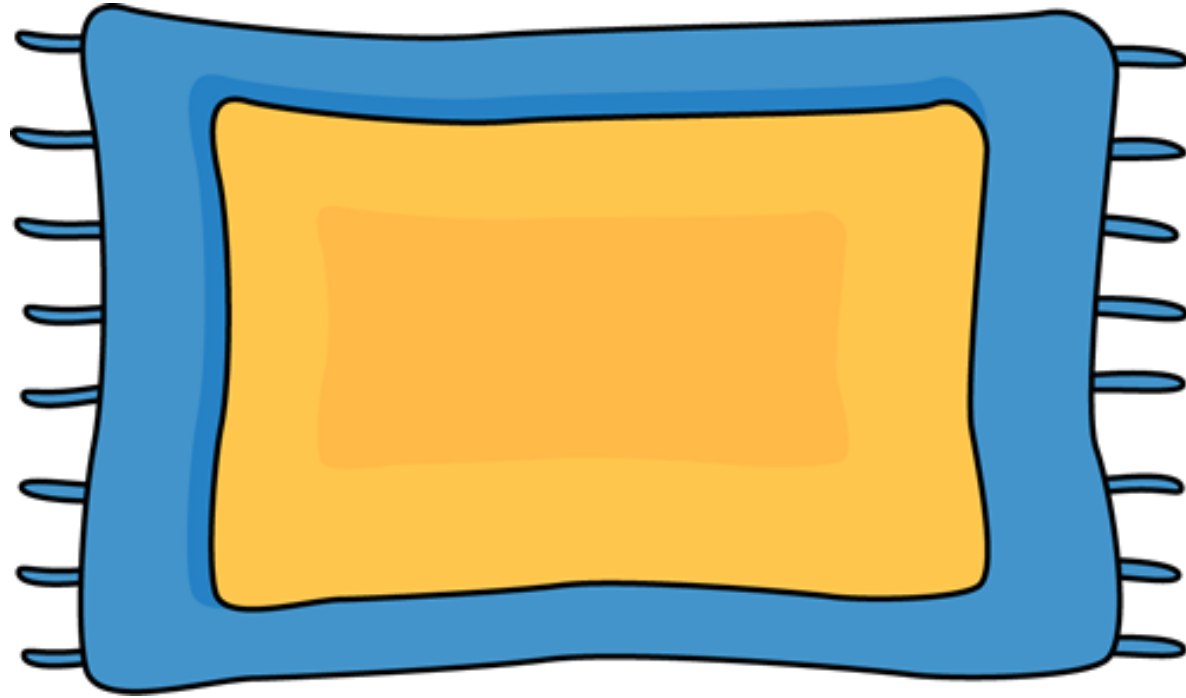
Word Family -at Reader



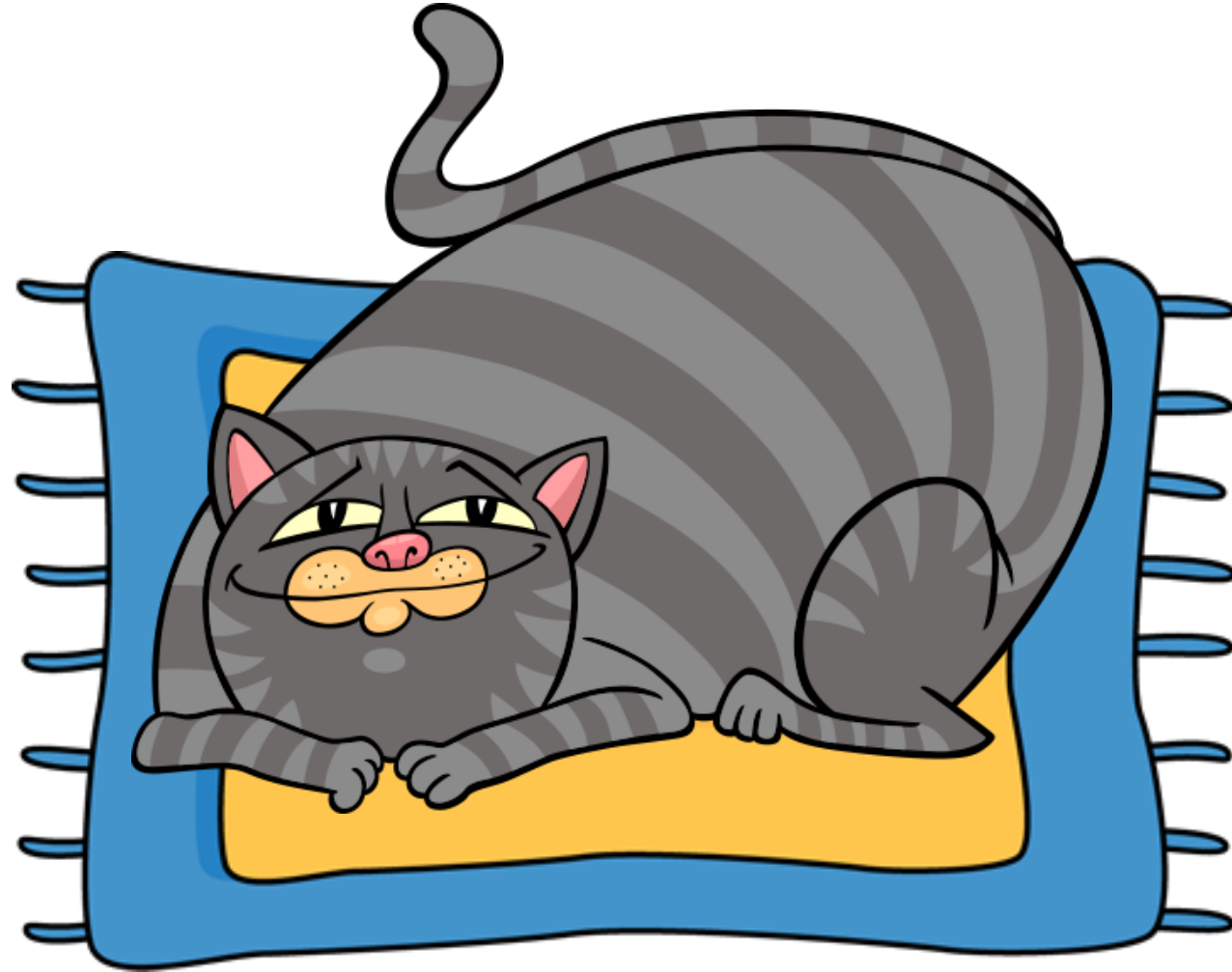
Emergent
Reader
featuring
the -at word
family



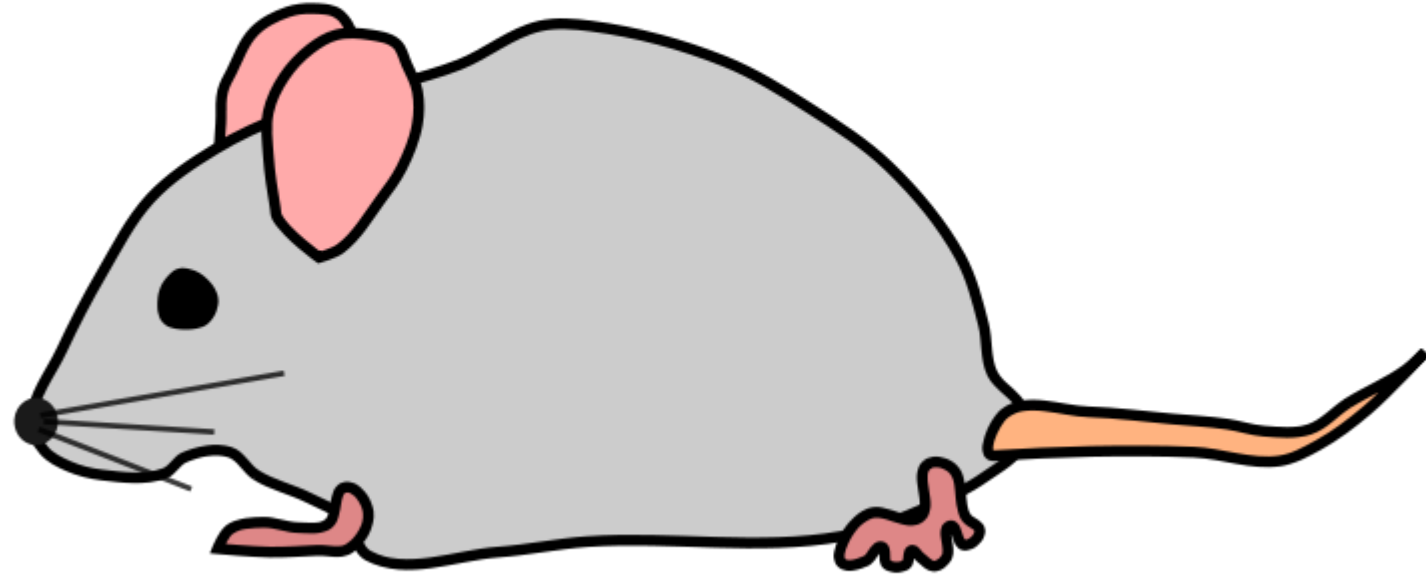
That is a fat cat.



That is a mat.



That fat cat sat on the mat.



That is a rat.



That rat sat on the fat cat.



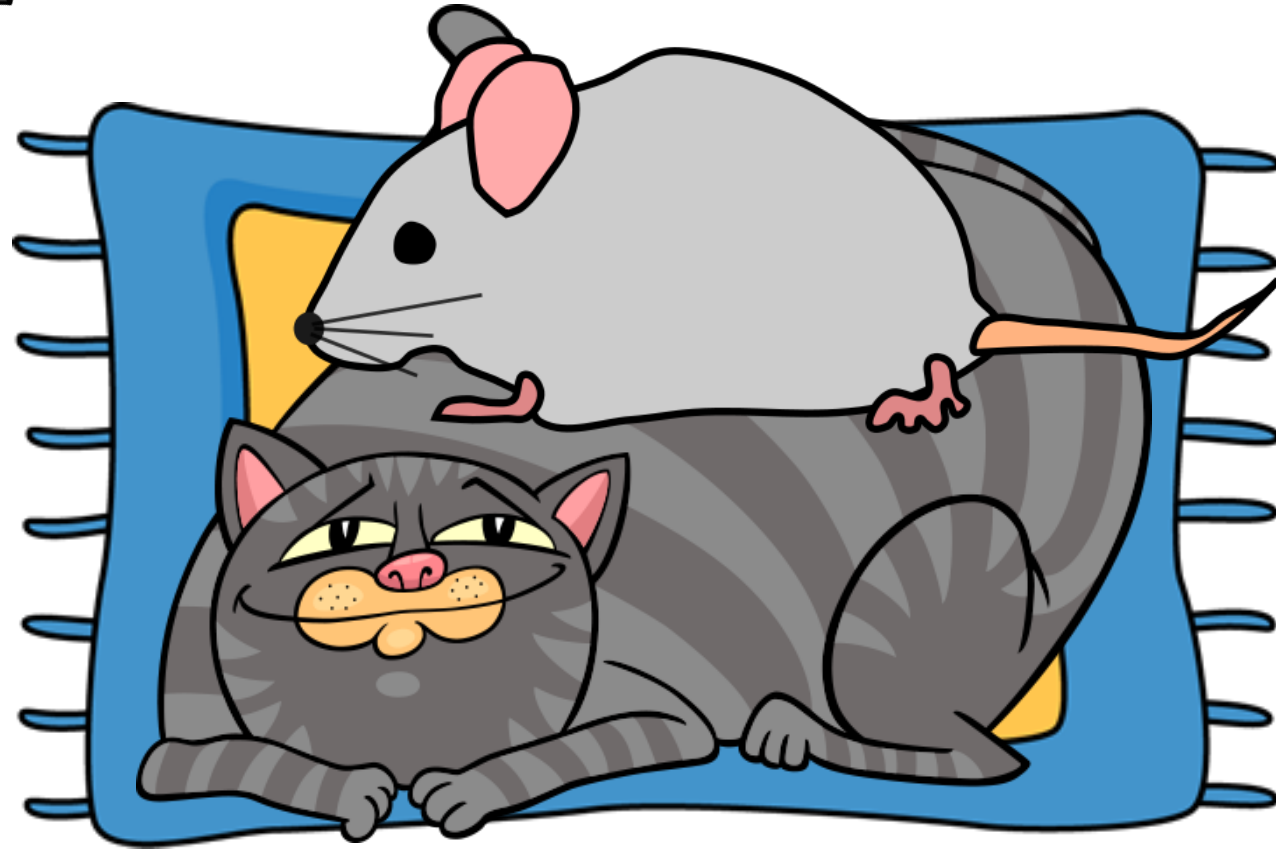
That is a bat.



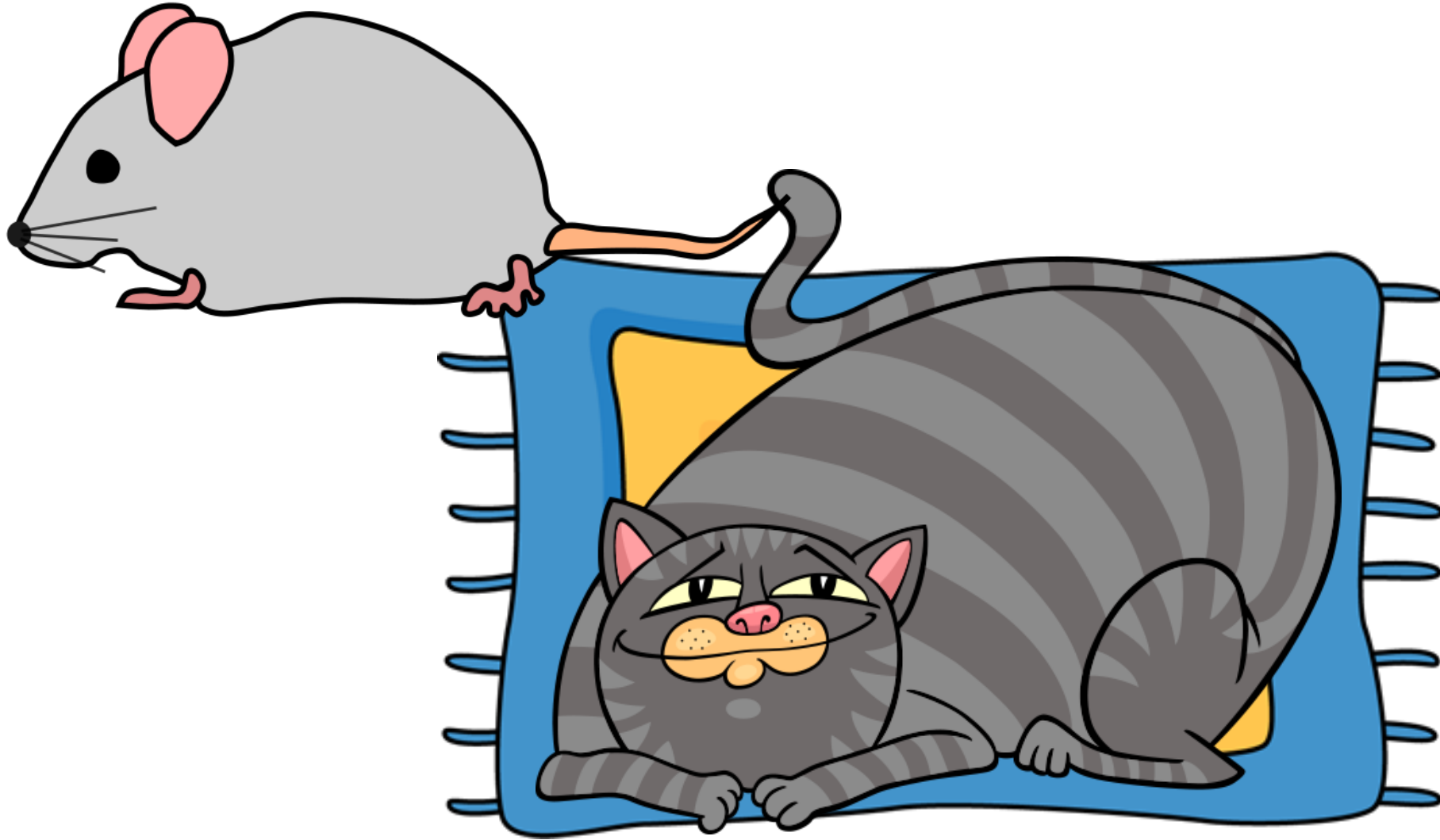
That bat sat on the rat.



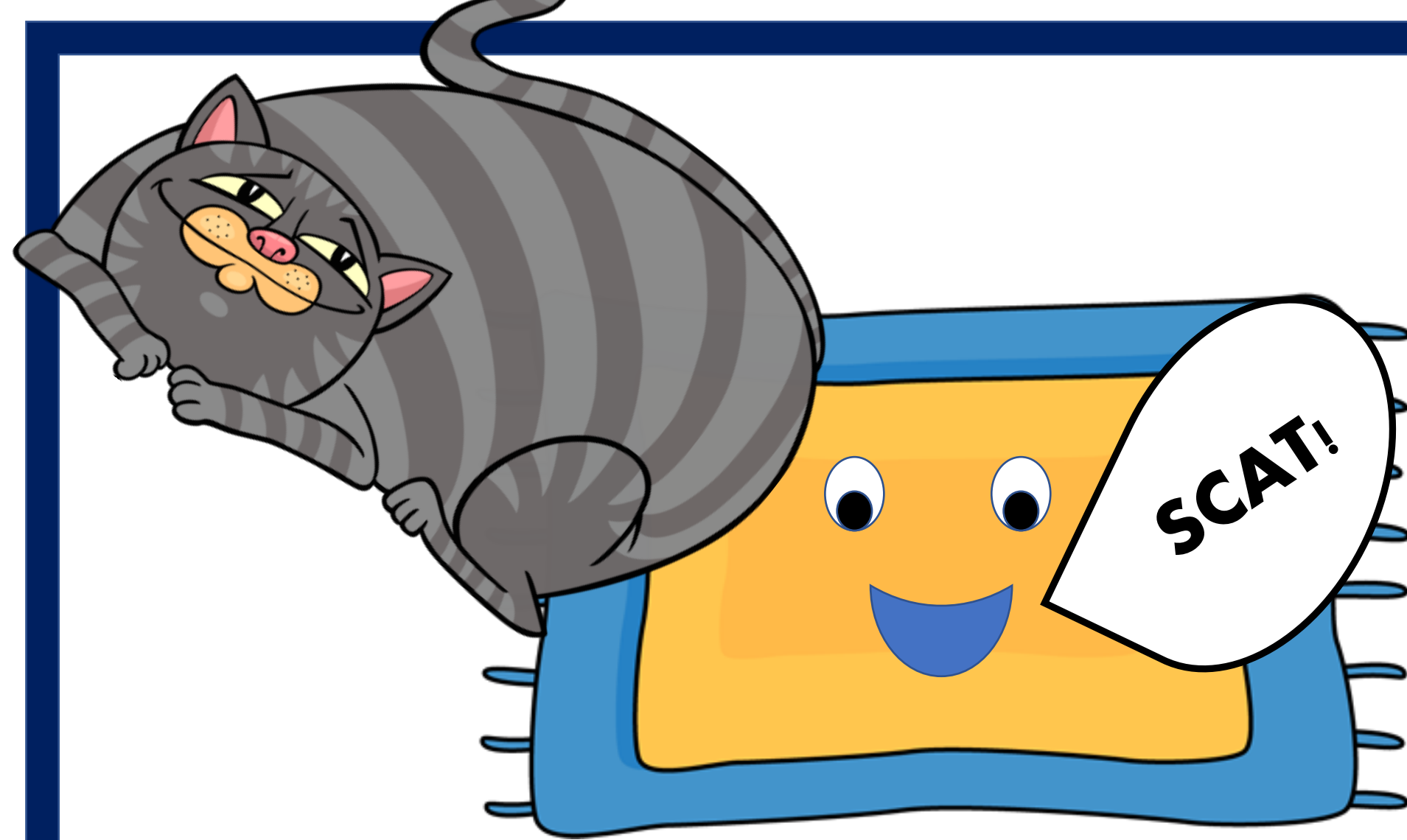
That bat sat on the rat.



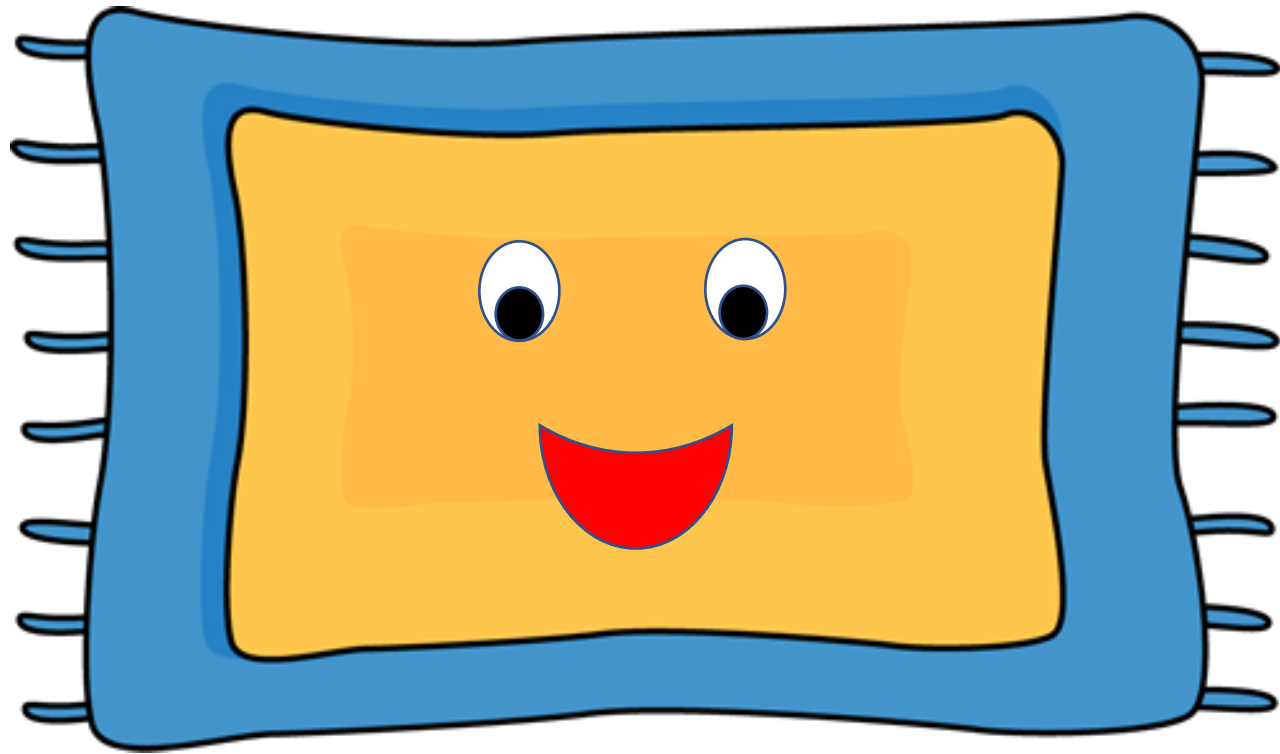
That rat told the bat to scat.



That fat cat told the rat to scat.



That mat told the fat cat to scat.



That mat sat.

Check out our
other FREE
resources at
The
Homeschool
Daily!

Keep thy tongue from evil, and
thy lips from speaking guile.

Psalm 34:13

