

Hi! Thank you for visiting [thehomeschooldaily.com](http://thehomeschooldaily.com) ! So glad you were able to find a school tool you can use. Please feel free to use this activity for your own personal use or if you are the main teacher in a coop setting. I provide this free resource to encourage others to homeschool their own.

If you would like to share the file with others, I ask that you share by sending them a link to my website or to the page that hosts the file. Please do not send them a link directly to just the PDF file (the file you are at now).

You may not sell, copy, or alter my files as your own. You may not host my files on your own website without linking them to [thehomeschooldaily.com](http://thehomeschooldaily.com) or giving proper attribution to [thehomeschooldaily.com](http://thehomeschooldaily.com) .

May you be blessed on your homeschooling journey.

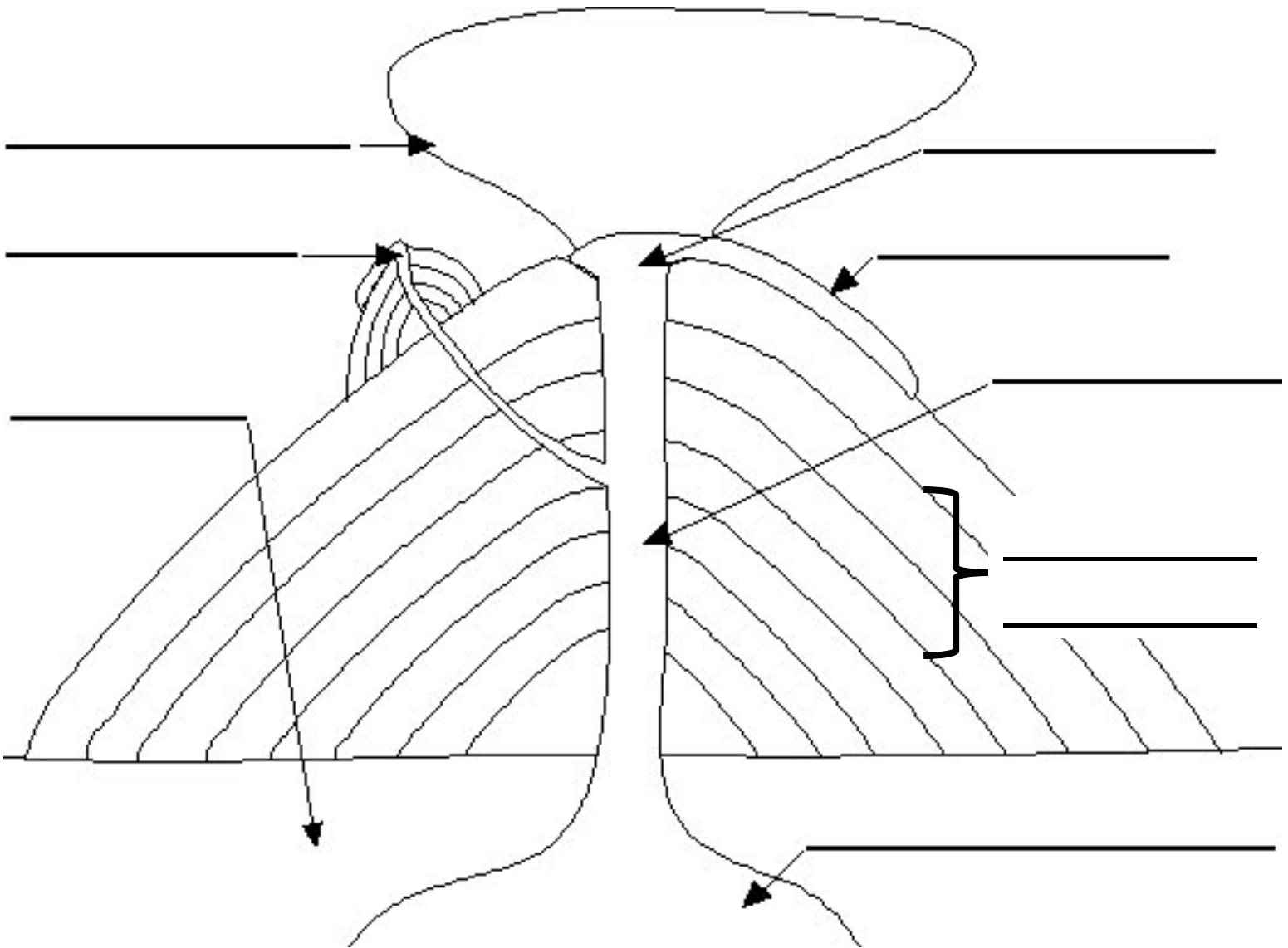
♥ Marie

## **VOLCANO DIAGRAM**

These two diagrams is a great resource to use when discussing with your child the different parts of a volcano. The word bank at the bottom of the worksheet assists a student in figuring out how to label the diagram. Use the Volcanoes Slideshow to help you review. There is a teacher's answer sheet attached. Happy learning!

## VOLCANO DIAGRAM

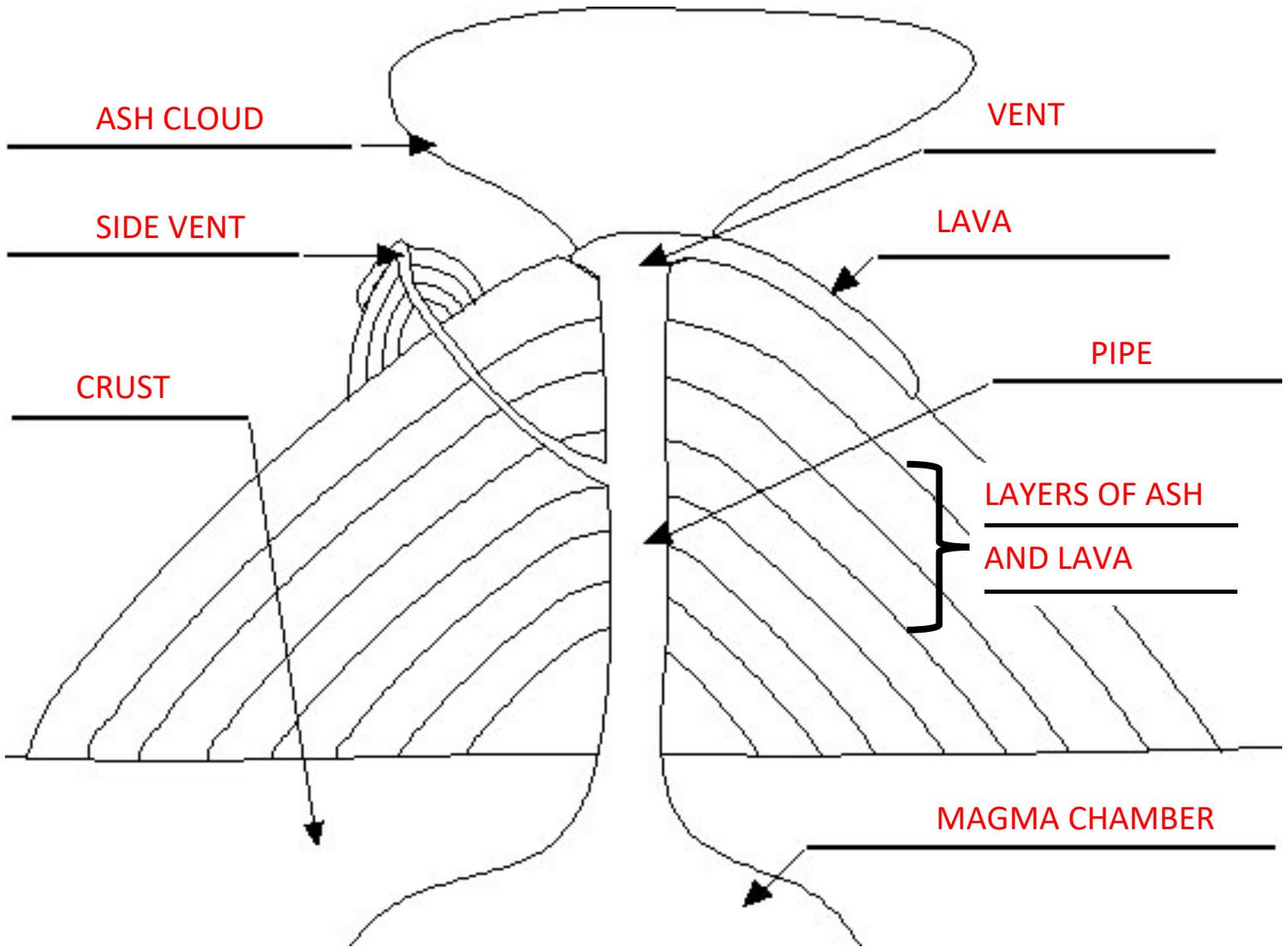
Use the word bank and the description of each to help you label the volcano.



<b>ASH CLOUD:</b> the cloud of ash that forms in the air after some volcanic eruptions.	<b>PIPE:</b> passage through which magma (molten rock) flows in a volcano.
<b>CRUST:</b> Earth's outermost, rocky layer.	<b>LAVA:</b> molten rock; it usually comes out of erupting volcanoes.
<b>VENT:</b> an opening in the Earth's surface through which volcanic materials erupt.	<b>MAGMA CHAMBER:</b> It contains magma (molten rock) deep within the Earth's crust.
<b>SIDE VENT:</b> a vent in the side of a volcano.	<b>LAYERS OF ASH AND LAVA:</b> Layers made when lava hardens, and ash falls after eruption

# VOLCANO DIAGRAM

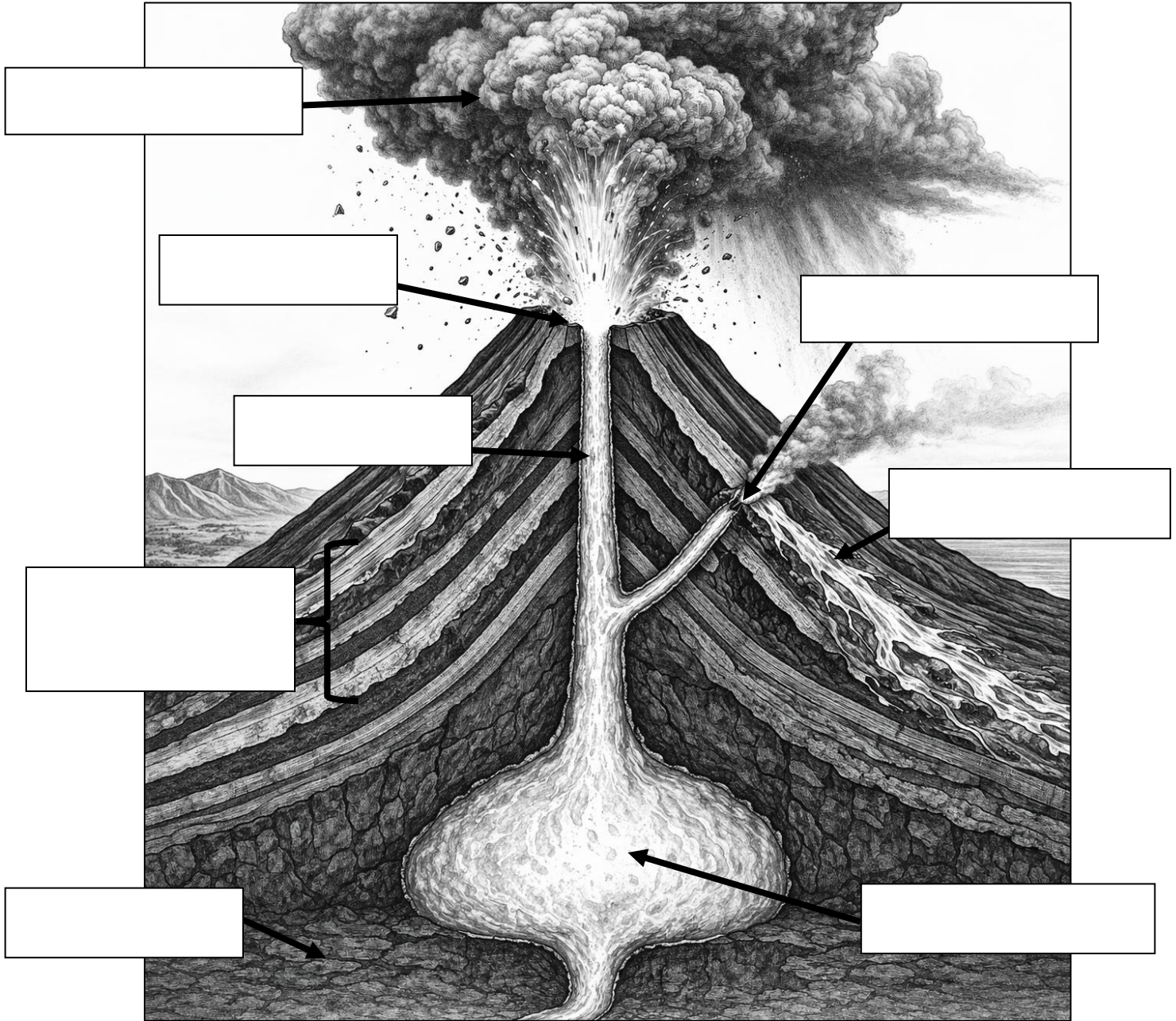
Use the word bank and the description of each to help you label the volcano.



<b>ASH CLOUD:</b> the cloud of ash that forms in the air after some volcanic eruptions.	<b>PIPE:</b> passage through which magma (molten rock) flows in a volcano.
<b>CRUST:</b> Earth's outermost, rocky layer.	<b>LAVA:</b> molten rock; it usually comes out of erupting volcanoes.
<b>VENT:</b> an opening in the Earth's surface through which volcanic materials erupt.	<b>MAGMA CHAMBER:</b> It contains magma (molten rock) deep within the Earth's crust.
<b>SIDE VENT:</b> a vent in the side of a volcano.	<b>LAYERS OF ASH AND LAVA:</b> Layers made when lava hardens, and ash falls after eruption

## VOLCANO DIAGRAM

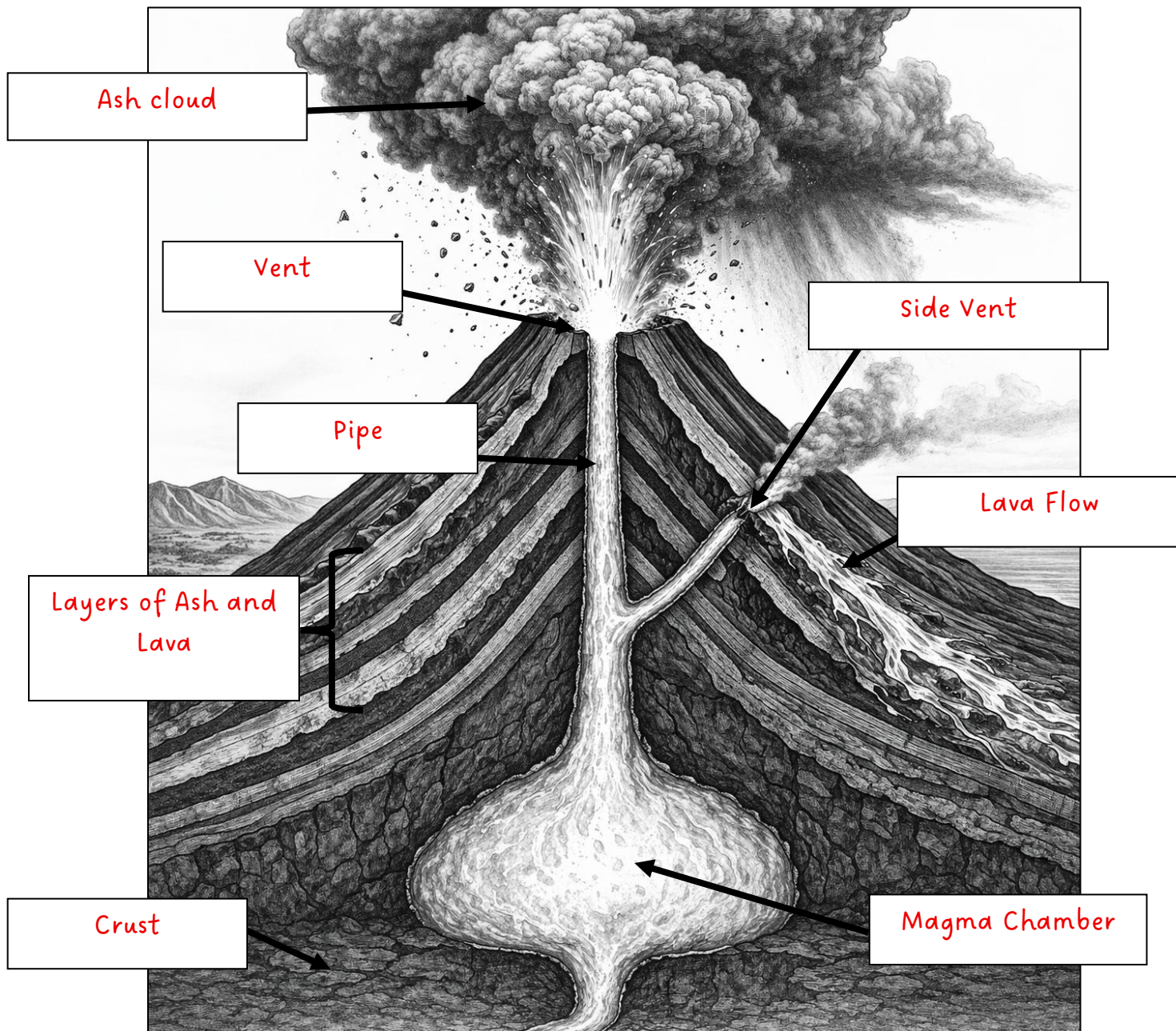
Use the word bank and the description of each to help you label the volcano.



<p><b>ASH CLOUD:</b> the cloud of ash that forms in the air after some volcanic eruptions.</p>	<p><b>PIPE:</b> passage through which magma (molten rock) flows in a volcano.</p>
<p><b>CRUST:</b> Earth's outermost, rocky layer.</p>	<p><b>LAVA FLOW:</b> molten rock; it usually comes out of erupting volcanoes.</p>
<p><b>VENT:</b> an opening in the Earth's surface through which volcanic materials erupt.</p>	<p><b>MAGMA CHAMBER:</b> it contains magma (molten rock) deep within the Earth's crust.</p>
<p><b>SIDE VENT:</b> a vent in the side of a volcano.</p>	<p><b>LAYERS OF ASH AND LAVA:</b> layers made when lava hardens, and ash falls after eruptions.</p>

## VOLCANO DIAGRAM

Use the word bank and the description of each to help you label the volcano.



<b>ASH CLOUD:</b> the cloud of ash that forms in the air after some volcanic eruptions.	<b>PIPE:</b> passage through which magma (molten rock) flows in a volcano.
<b>CRUST:</b> Earth's outermost, rocky layer.	<b>LAVA FLOW:</b> molten rock; it usually comes out of erupting volcanoes.
<b>VENT:</b> an opening in the Earth's surface through which volcanic materials erupt.	<b>MAGMA CHAMBER:</b> it contains magma (molten rock) deep within the Earth's crust.
<b>SIDE VENT:</b> a vent in the side of a volcano.	<b>LAYERS OF ASH AND LAVA:</b> layers made when lava hardens, and ash falls after eruptions.